



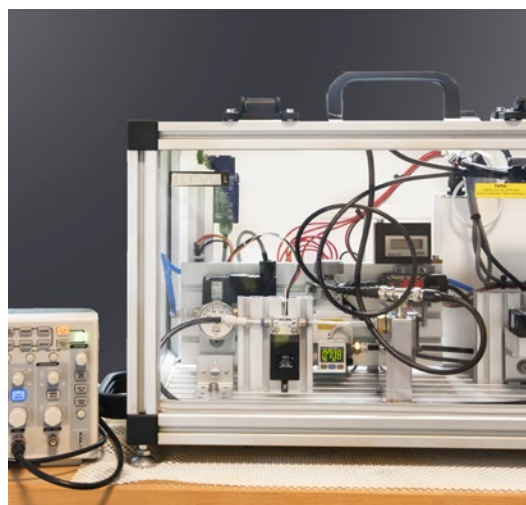
# INNOVATION AND R&D OUR FUTURE

We are your partner for special requirements,  
at your side developing together.

At voestalpine Precision Strip AB we always accept a challenge. Our Innovation initiatives are moving our business into new product areas and markets. Redefining the limits of what is possible.

The R&D department in Munkfors ensures continuous enhancements in the product and process areas. We are your preferred partner for your special requirements, at your side supporting your product development. Our strength lies in the combination of the latest technologies and our experienced workforce.

As part of the voestalpine Group, we control all essential quality parameters, starting from the specific selection of steel grades which perfectly suit your applications. Whenever new demands for new applications require it, we can develop project-specific alloys together with our customers.



With the latest technologies and equipment we can offer product specific:

- » Impact fatigue testing
- » Fracture studies
- » Wear profiles and angles
- » Full material analysis
- » XRD and SEM studies

voestalpine Precision Strip AB  
Drottninggatan 40  
SE-652 25 Karlstad, Sweden  
T. +46 563 160 00  
[www.voestalpine.com/precision-strip](http://www.voestalpine.com/precision-strip)

voestalpine  
ONE STEP AHEAD.

PREFERENS / Print, CityType, Karlstad / Photo: Folgerström, Vimmer / Illustration: Graphic, Vimmer



voestalpine Precision Strip AB  
[www.voestalpine.com/precision-strip](http://www.voestalpine.com/precision-strip)

voestalpine  
ONE STEP AHEAD.

# COLD ROLLED STRIP FOR THE TISSUE INDUSTRY

voestalpine Precision Strip AB supplies cold rolled, hardened and tempered strip steel for the Paper and Print industry. We supply semi-finished coater, creping and printing doctor blades for blade manufacturers but also blades ready for use by the end customers.



The “Q” and “S” images represent rotational movement, the dynamic flow process, continuous production and the efficiency of the paper & board machine. This compliments the “line” as our blades. The goal is to match the exactness of the line with the fluidity of the process.

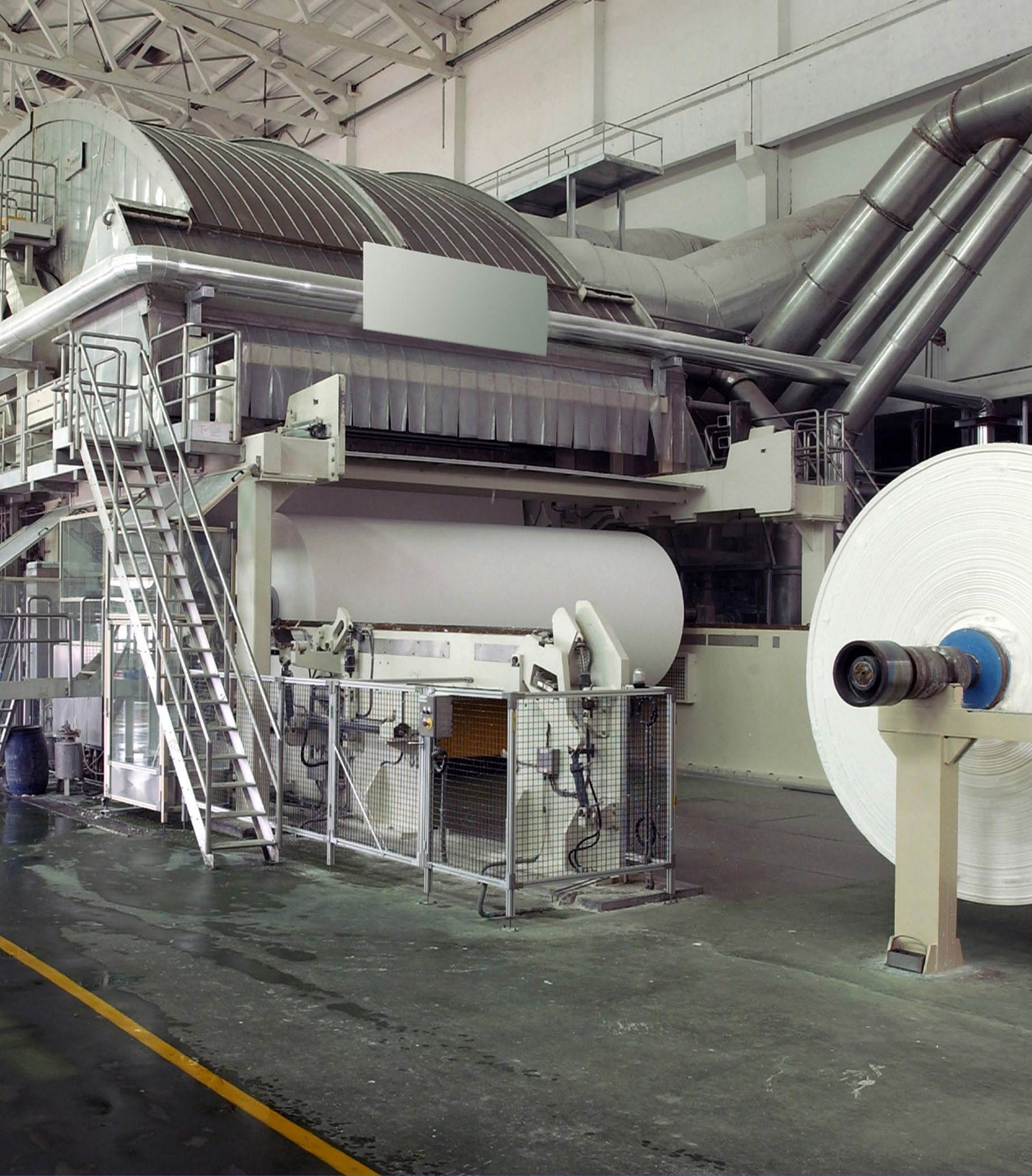
Our program includes both standard and special steel coater doctor blades. We supply both blade material and finished products to doctor blade manufacturers and end users i.e. paper mills.

voestalpine Precision Strip, with the uddeholmstrip® brand, offers customers products with a superior life time, stable production with less vibration and reduced production down time. Resulting in overall productivity gains and reduced production costs.

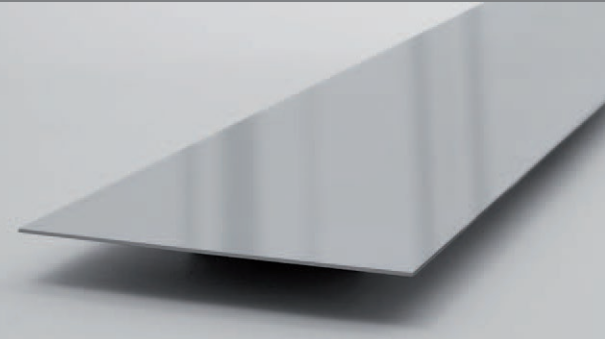
The entire manufacturing route from receiving hot rolled steels to cold rolled, heat treated and finalized blades is done in house, enabling full control of the end product. This gives outstanding mechanical properties and dimensional consistency providing excellent performance on machines especially at high production temperatures.

### Productivity & runability

- » Exceptional runability performance with our high quality creping blades.
- » Higher wear resistance for fewer blade changes.
- » Overall productivity gains and reduced production costs.



## S-CREPE

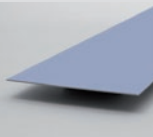


Range of thickness: 0.889 mm to 1.27 mm  
Range of width: 100.0 mm to 140.0 mm

### STEEL CREPING BLADES

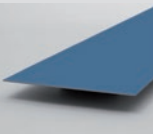
uddeholmstrip® offers a wide range of standard high carbon and stainless steel blades with excellent mechanical properties and superior finishes.

These blades have been used and trusted for many years globally.



#### S-CREPE C

- High carbon steel
- Consistent blade properties with a good cost benefit ratio
- Suitable for frequent tissue quality changes



#### S-CREPE C+

- High carbon steel with enhanced wear resistance
- Offering improved "value for money"
- Suitable for longer production runs

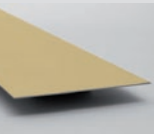


#### S-CREPE S

- Martensitic stainless steel blade
- Improved properties combined with enhanced corrosion resistance.
- Proven performance with excellent references.

### SPECIAL CREPING BLADES

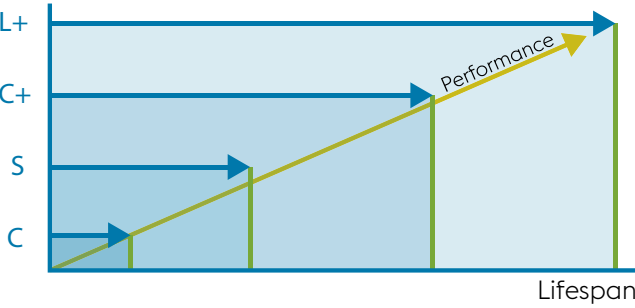
uddeholmstrip® is unique in producing creping doctor blades made from patented high alloyed steel grades with optimised wear resistance and the best creping performance available from a steel blade.



#### S-CREPE L+

- High alloyed steel
- Excellent lifetime
- Superior strength and hardness at high temperatures

Product



Multiple bevel options on the blade edge with a superior surface quality.

Our aim is to offer the customer the perfect blade. With our state of the art equipment and ownership of the full process route from producing the steel to finished blade, we guarantee superior blade quality.

Slit and deburred or ground 90°



Customized angle

